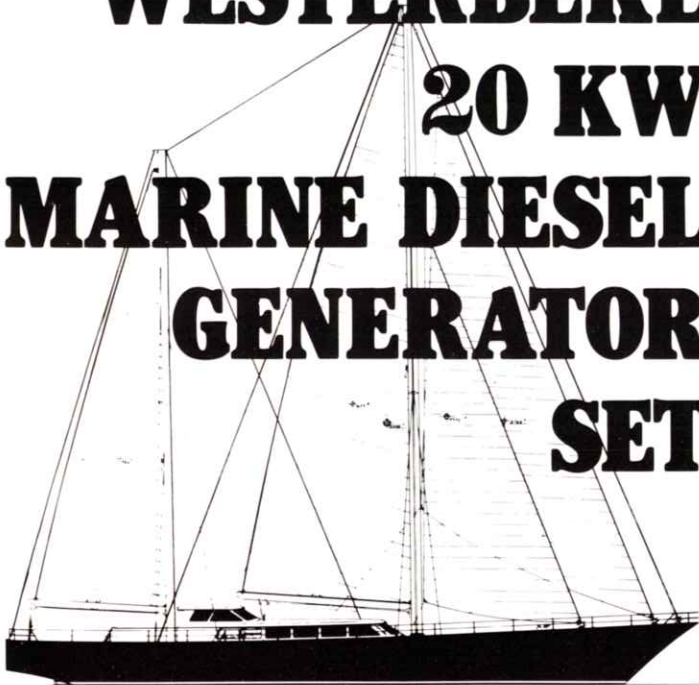


# WESTERBEKE 20 KW MARINE DIESEL GENERATOR SET

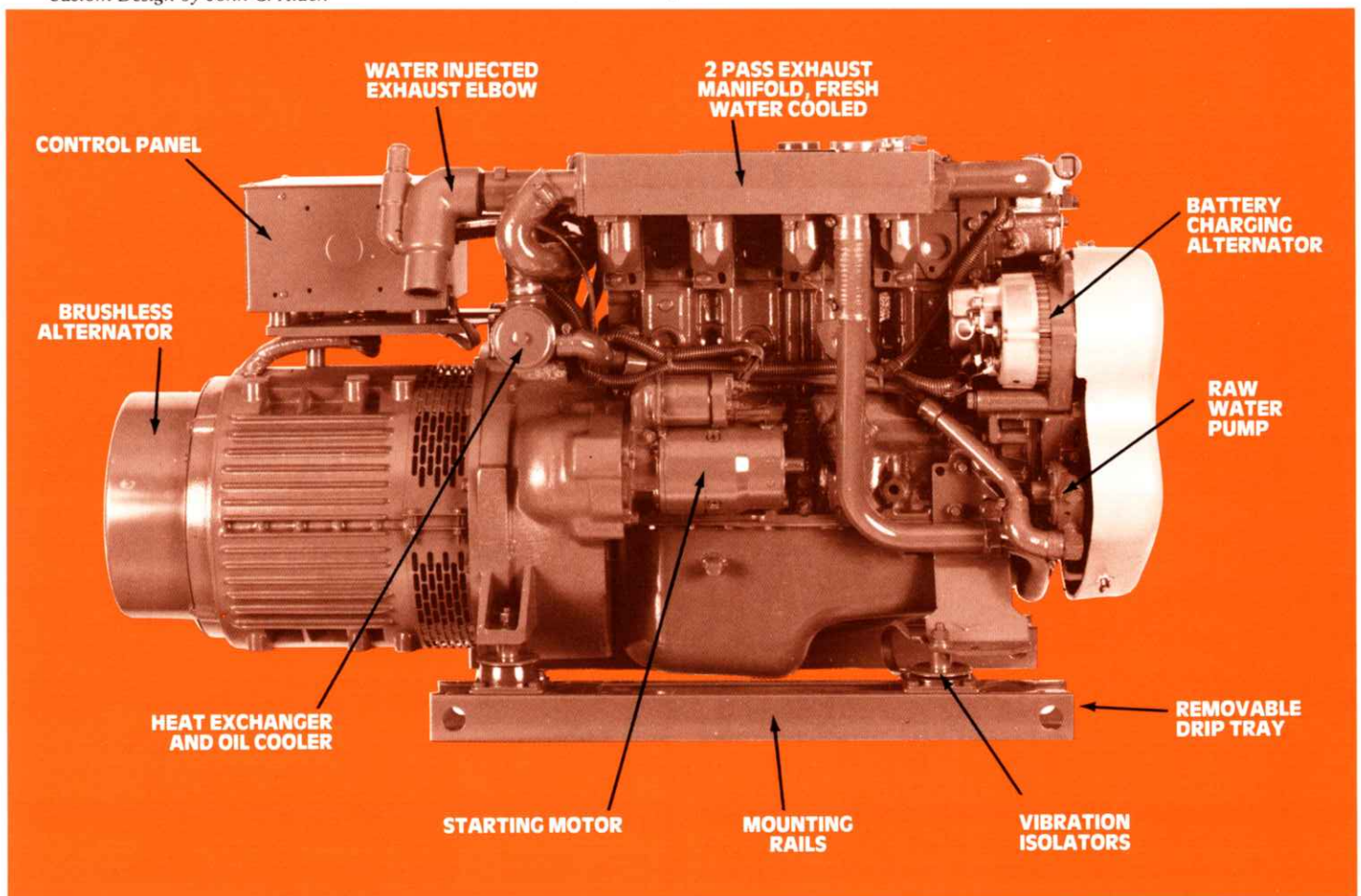


Custom Design by John G. Alden

A small, reliable, smooth running Generator Set for all your shipboard needs; 120 volt electrical power at the turn of a switch for: Electric Cooking, Microwave Oven, Refrigeration, Cabin Appliances, Power Tools, and Navigation/Communication Equipment. Like all Westerbeke Generator Sets, it is fresh water cooled with an Engine mounted Heat Exchanger. The Engine and Generator are connected through special "Commonized" Drive Discs, Flywheel and Flywheel Housing into a compact, carefully aligned Generator Set. The complete unit is mounted on lightweight rails through soft flexible Isolator Mounts that prevent the transfer of vibration. A lightweight removable Drip Tray is fitted under the unit between the mounting rails. The Engine is fitted with a Bosch Type Pump and Self Bleeding Fuel System that reduces hand priming and bleeding. Cast iron cylinder head and block plus swirl type combustion chamber plus tuned air intake silencer produce quiet running unmatched in the industry.

The Westerbeke 20 is lightweight, safe dependable, durable, and economical to operate. Designed to operate at a quiet 1800 RPM, the Westerbeke 20 offers 4 cylinder, 4 cycle smoothness to provide complete electric living on board.

**FOR POWER OR SAIL . . . USE THE INDUSTRY STANDARD MARINE GENERATOR SETS FROM WESTERBEKE.**



# W

**GENERATORS: 3, 4.4, 6, 8, 11, 12.5, 15, 20, 25, 32, 45 kw's**

**Fresh Water Cooled Diesel and Gasoline Generators from Westerbeke.**

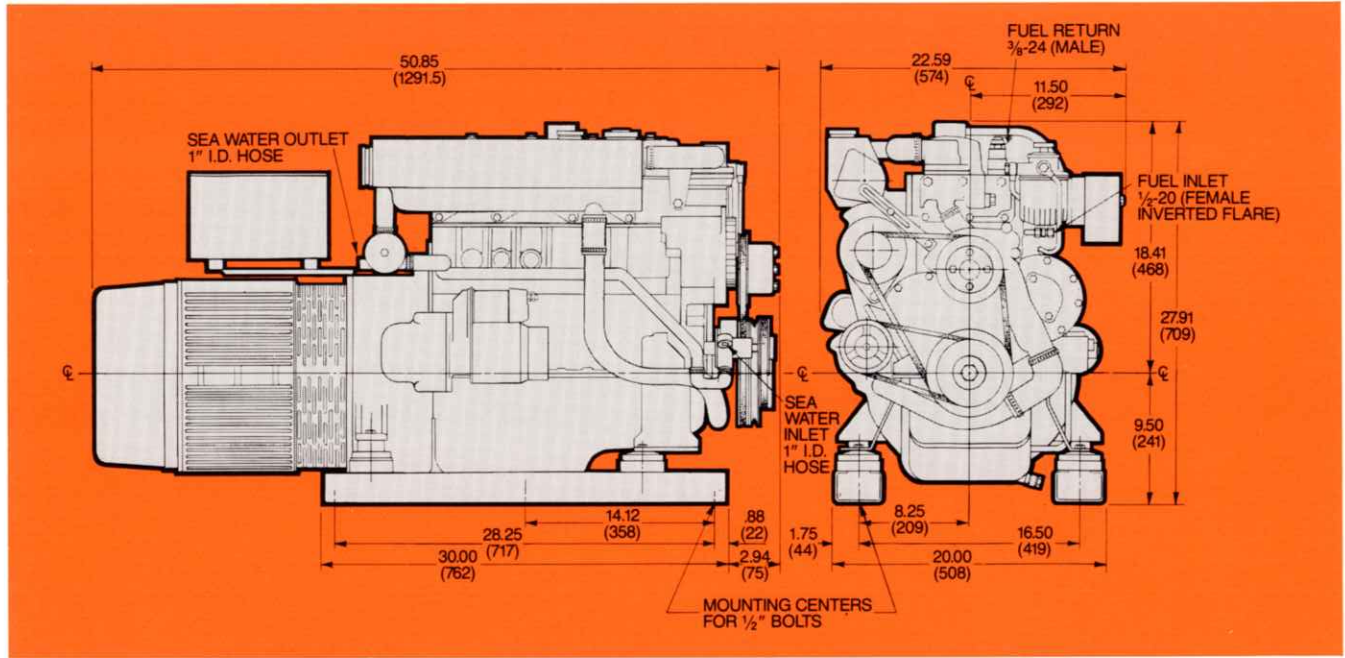
# WESTERBEKE 20 KW MARINE DIESEL GENERATOR

## RECONNECTABLE BRUSHLESS ALTERNATORS

MODEL	ELECTRICAL CHARACTERISTICS					RATINGS		ENGINE	
	VOLTS	AMPS	HERTZ	PHASE	WIRE	1.0 POWER FACTOR	RPM	START	
WMF-20-614	120/240	166/83	60	1	4	20KW	1800	Remote	
WMF-20-634	120/240*	48	60	3	4	20KW	1800	Remote	
WMF-16-514	220	160/80	50	1	4	16KW	1500	Remote	
WMF-16-534	220/380*	46	50	3	4	16KW	1500	Remote	

\* 12 Lead reconnectable adjustable for 60 or 50 HERTZ operation.

**WESTERBEKE 20 KW**



### ENGINE

Engine Type .4 cycle, 4 cylinders, water cooled diesel  
 Displacement . . . . . 154 C.I.D.  
 Compression Ratio . . . . . 21:1  
 Combustion Chamber . . . . . Swirl Type  
 Injection Pump . . . . . Bosch Type  
 Governor . . . . . Mechanical, built in pump, yields  
 frequency regulation of  $\pm 2\%$   
 Power Available . . . . . 40 HP @ 1800 RPM  
 Engine fitted and piped for self priming

### ALTERNATOR

Type . . . . . Rotating field  
 Insulation . . . . . Class F  
 One piece housing assures perfect alignment.  
 High flow centrifugal fan assures ample cooling air.  
 Solid state regulator, moisture proof, controls voltage  
 to  $\pm 2\%$ .

### STANDARD EQUIPMENT

12 Volt 55 Ampere Alternator • Fresh Water Cooling System • Coolant Recovery Tank • Air Intake Silencer • 12 Volt Starting Motor • Vibration Isolators • Water Injected Elbow • Operators Manual • Hi Water Temp. and Lo Oil Pressure Shutdown • Hi Exhaust Temp. Shutdown.



STANDARD MOUNTED PANEL



OPTIONAL "SOUND GUARD" SOUND ENCLOSURE  
 64" x 32" x 26" overall  
 Weight 185 pounds

### OPTIONAL EQUIPMENT

Hydro Hush Silencer • Remote Instrument Panel • 15' Cable for Remote Panel • "Sound Guard" • Ship to Shore Transfer Switch.

Contact your Westerbeke Representative



or Contact the . . .



**J. H. WESTERBEKE CORP.**

AVON INDUSTRIAL PARK, AVON, MA 02322 • TEL: (508) 588-7700  
 TELEX: 92-4444 • FAX: (508) 559-9323 • CABLE: WESTCORP